



pacific forest
— ALLIANCE —

APRIL SALUMEI REDD PROJECT

PROJECT DESIGN AND VALIDATION BRIEF

February 2013



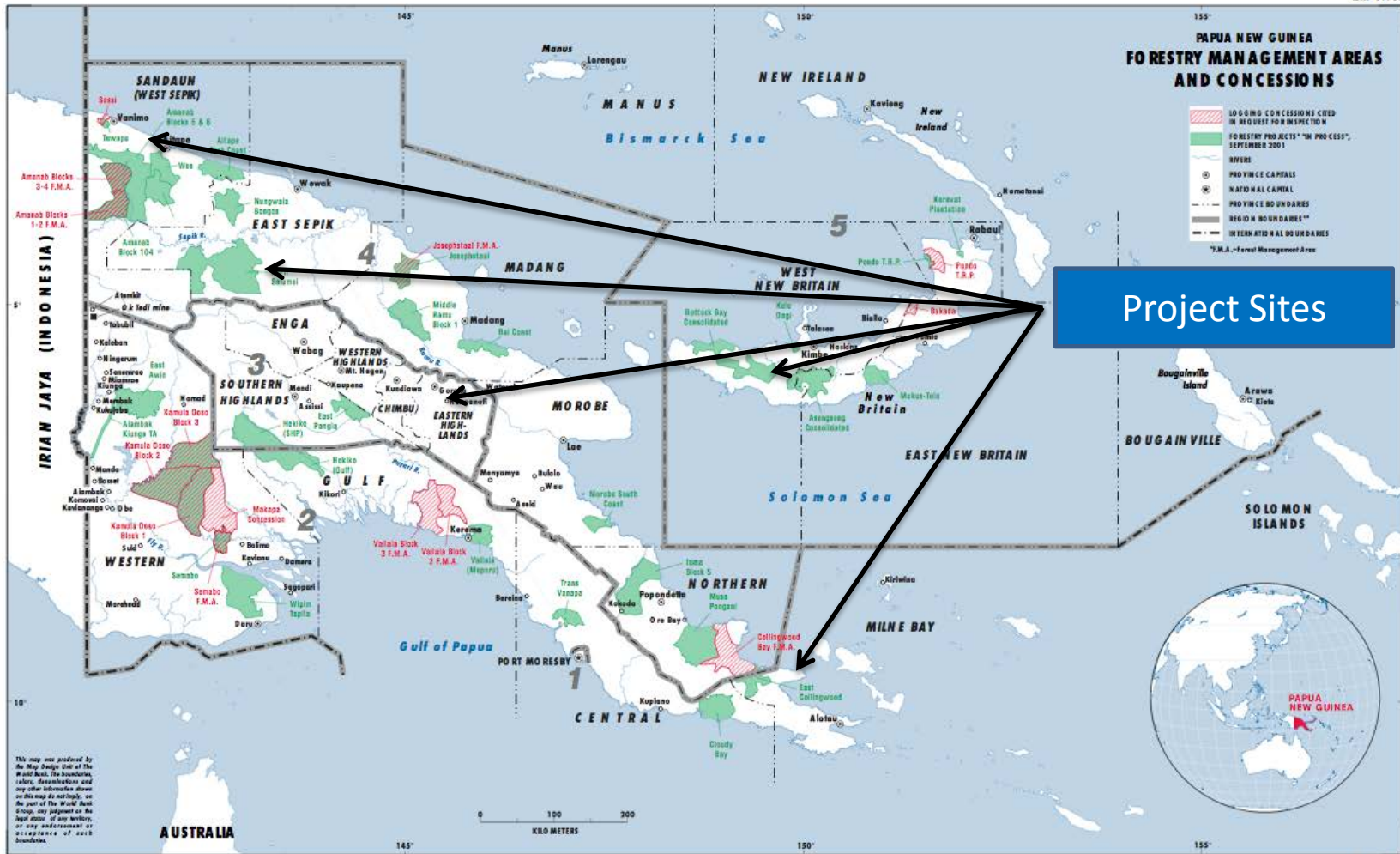
PNG Government

Technical

Traditional Owners

NGO

April Salumei REDD Project Project Partners



Papua New Guinea Demonstration Projects PNGFA

SCIENTIFIC CERTIFICATION SYSTEMS

Statement of CCB Standards Compliance

April Salumei Sustainable Forest Management Project

Validation Scope:

The SCS Greenhouse Gas Verification Program has conducted a validation of the April Salumei Sustainable Forest Management Project against the requirements of the Climate Community Biodiversity Alliance (CCBA) Project Design Standards, Version 2.0 (December 2008). SCS conducted both desk and field based assessment activities in its evaluation of the project. SCS used the Project Design Document supplied by Rainforest Project Management Limited as the basis for its evaluation.

Validation Opinion:

Based on the results of our validation activities, it is our opinion that the project meets the quality standard defined by CCBA. The April Salumei Sustainable Forest Management Project conforms to the 14 Required CCB Criteria. The project also conforms to a total of Optional CCB Criteria qualifying the project for Gold Level.

Certificate # SCS-GHG-000019

Date: 6/13/2011



Todd Frank, SCS Lead Verifier
Scientific Certification Systems



Robert J. Hrubes, PhD, Senior Vice
Scientific Certification Systems



SCIENTIFIC CERTIFICATION SYSTEMS
Certification for a sustainable world®



2000 Powell Street, Suite 600, Emeryville, CA 94608 USA

April Salumei REDD Project
CCB Validation Certificate

Establish core management team

- Multi-discipline team to ensure strong project, social and financial management

Establish core information systems

- Land tenure, Risk Mitigation databases
- Project and financial reporting systems

Consolidate Community and Political interfaces

- Establish Community and Political liaison committees to ensure input and feedback on progress

Development of Management capacity

- Ensures steady staff profile strongly aligned to Social Outcomes

Support Local Community Structures

- Ensures strong local personal commitment and development

Invest in information systems; Social, Operational, Finance and Admin

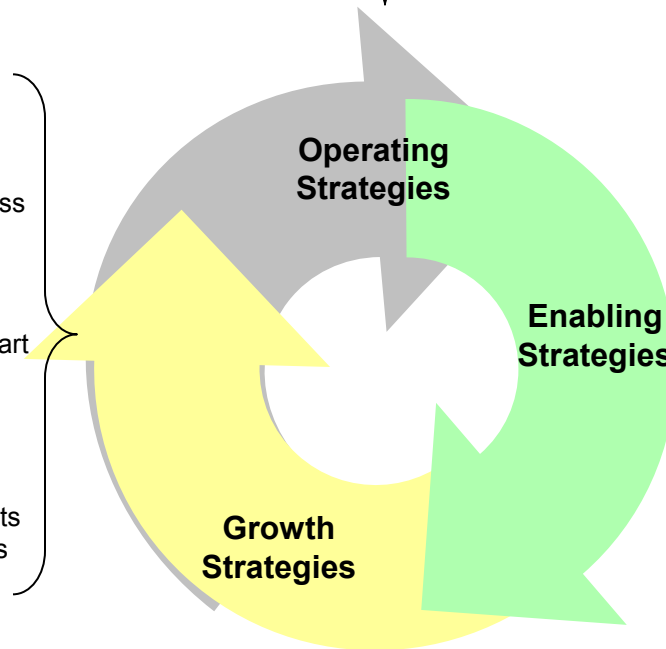
- Ensures consistent and regular monitoring of project KPIs

Risk Management

- Regular Risk Review, Assessment and Control

Quality and Innovation

- Ensures continuous improvement and stretch targets



Continued project initiation

- Measurement of project effectiveness and review of opportunities

Reforestation initiatives

- Seek to establish reforestation as part of community enterprise

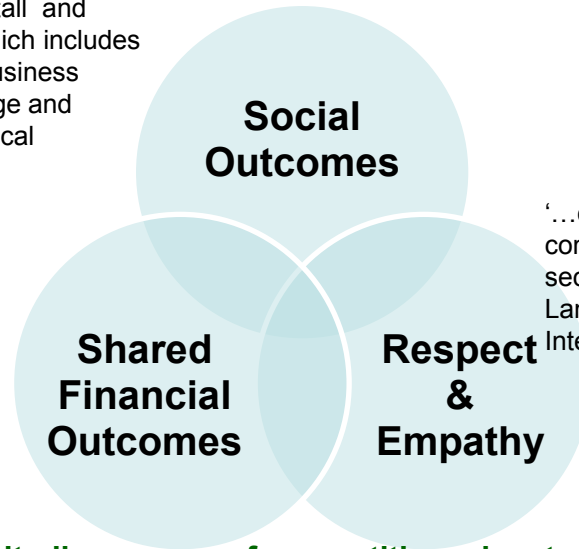
Carbon offset Manager to resource projects

- Assist facilitation of resource projects by providing links to carbon projects

Rainforest Project Management Limited's management philosophy is focused on three core principals; Social Outcomes, Respect & Empathy and Shared Financial Outcomes.

'...committed to ensuring carbon credit funds are used for to development, install and maintain social infrastructure which includes the development of social and business structures and systems to manage and develop world class, long term local community outcomes

'...financial outcomes are shared fairly and in accordance with legal agreements thereby ensuring ethical and sustainable outcomes '



'...committed to mutual respect, open communication, empathy and strong work ethic to secure the respect and trust of the Traditional Land Owners, the Provincial Governments and the International Community '

Rainforest project Managements Limited's sources of competitive advantage

Social Outcomes

- ✓ Established strong relationships with political factions of PNG, NGO's and Traditional Owners to develop a reputation as developer of choice
- ✓ Prepared to invest in the development of people and systems necessary for the delivery of sustainable social outcomes

Respect and Empathy

- ✓ Established strong relationships with political factions of PNG, NGO's and Traditional Owners to develop a reputation as developer of choice
- ✓ Close knit management team with Developing Country experience and success in start up companies

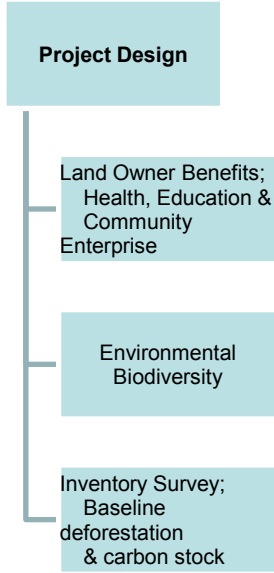
Shared Financial Outcomes

- ✓ Established legal agreements and financial models that clearly delineate shared financial outcomes
- ✓ Established alignment of interest between Land Owners, Political Authorities and Project Manager through the development of an endowment style financial structure

Establish Project **Project Design Verification & Certification** **Project Implementation**



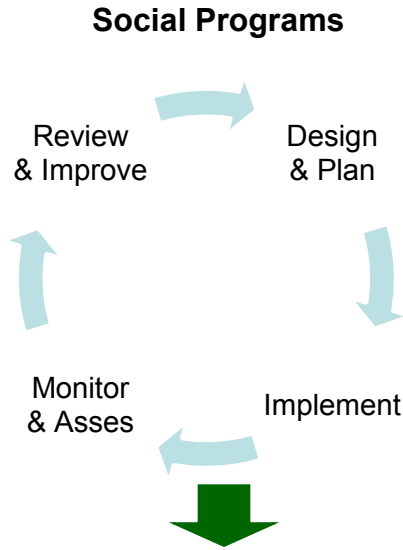
BINDING PROJECT APPROVAL



Independent Validation

INTERNATIONAL CERTIFICATION

Carbon Credit Sales
Trust funds Received



LAND OWNER BENEFITS

MILESTONES



April Salumei REDD Project
Stages in Project Development

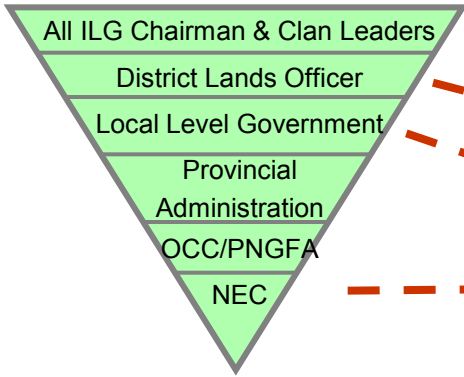
Establish Project

Stakeholder Engagement

Awareness
Free, prior and informed consent



UN Guidelines - Right of Indigenous people



IPA Confirmation



Lands Act



Elected by Land owners



Legally binding approval



BINDING PROJECT APPROVAL

MILESTONES

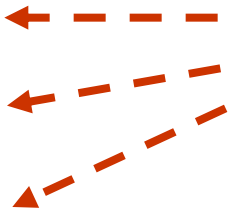
April Salumei REDD Project
Establishment safeguards

Project Design Verification & Certification

CCB Standard

Verified Carbon
Standard

ISO 14064-2



Project Design

Land Owner Benefits;
Health, Education &
Community
Enterprise

Environmental
Biodiversity

Inventory Survey;
Baseline
deforestation
& carbon stock



Independent Validation

**INTERNATIONAL
CERTIFICATION**

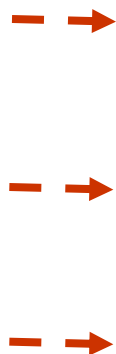
Established by Project Board
in conjunction with
Departments of Health,
Education & Provincial
Government

Linked to the 10 year district
development plans.

Co-funding to ensure
Departmental buy in

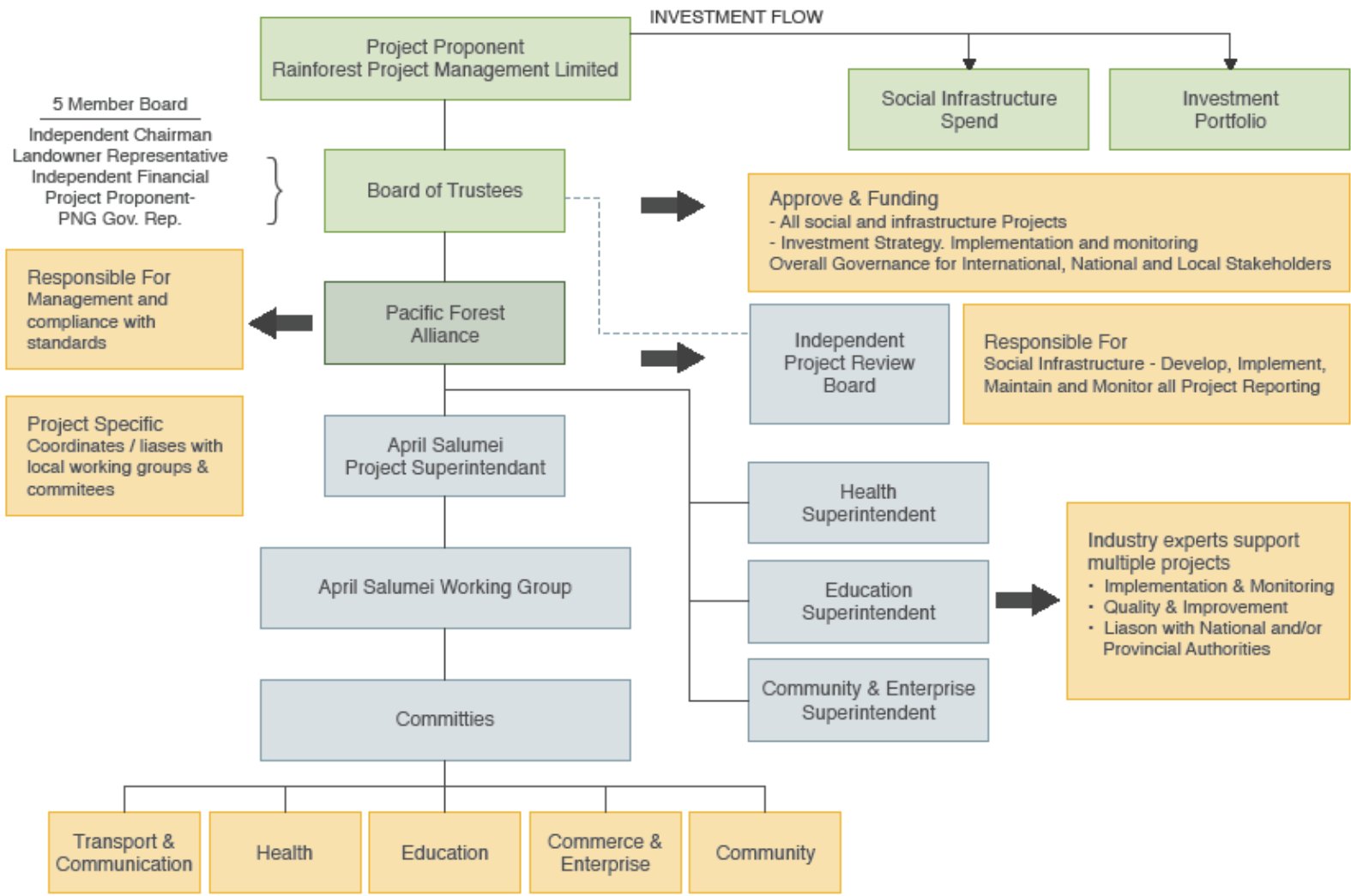
Established in conjunction
with University of PNG and
NGOs including PwM

ISO 14064-2
UPNG / PNGFA / OCCD
In country capacity building



MILESTONES

April Salumei REDD Project
Establishment safeguards cont.



April Salumei REDD Project Project Structure



April Salumei REDD Project



April Salumei REDD Project